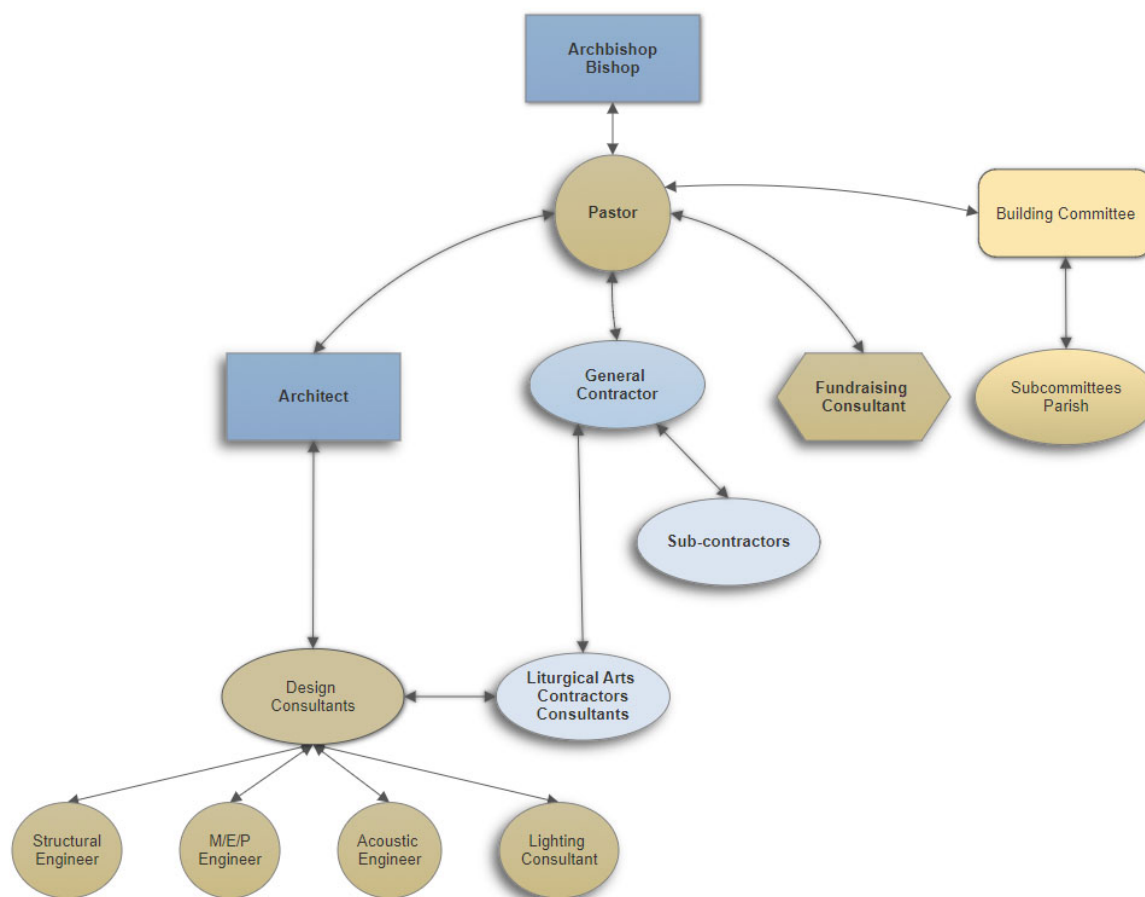


# Who is Who in the Church Building Process



Greetings on this feast of All Saints!

Often times when considering a new church building campaign, one can be overwhelmed by the many different team members that are involved in the process. To help you understand the roles of each professional, I would like to provide you the following diagram and article of the three primary team members.



Below is a list of the key players underneath the Design and Building team members.

## Pastor/Client



### The Why and The What

The pastor is the leader of the parish and the primary motivator for the capital improvement or church building campaign. He is the primary person to catechise the parishioners on **the why** we do what we do when we build a sacred space. With the help and advice of his staff, committees, and parishioners, he can help lead a project to successful completion.

## Building Committee



The building committee typically consists of a group

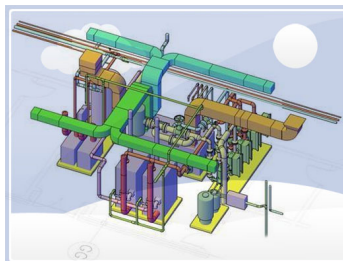
## Architect



### The What and the Why

The architect serves the client, pastor, and parish. They provide the ability to visualize and communicate the project to everyone on the project. The architect primarily creates **the what** but if they are trained in Catholic sacred architecture, they can also help to enforce **the why** behind the design. It is crucial for an architect to be well-versed in theology, philosophy, the liturgy, and the documents of the Catholic church so that they can provide insight and cohesion between all of the project members.

### Consultants



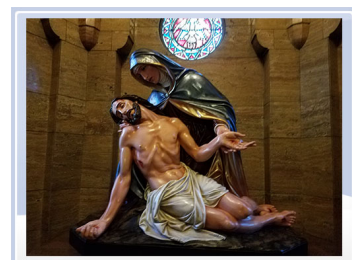
## Builder



### The How

The builder uses their skills, talents, and craftsmanship to build the design of the client and architect. They are in charge of **how** the design is built and the schedule by which it is to be built. They are crucial members of the team and should be involved in the project as soon as possible, even during the early design phase.

## Liturgical Arts Contractor



The Liturgical arts contractor offers special craftsmanship in artistry, painting,

of parish leaders and experts who advise the pastor and design team as to **what** the needs, wants, and desires of the parish. They can be viewed as representatives for the greater parish.

## Fundraising Consultant



The fundraising consultant provides the public relations and marketing know-how for reaching your parishioners and getting them involved in the capital campaign. They are crucial to the financial success of many building campaigns. They know how to reach the people, inform them, and raise the funds.

## MEP & Structural

Mechanical, Electrical, Plumbing and Structural consultants are the primary design team members. They operate under the direction of the architect and are typically a part of the architect's fees. No one of use knows what all of us knows. Therefore it is critical for the design team to be an assembly of experts in their specified fields.

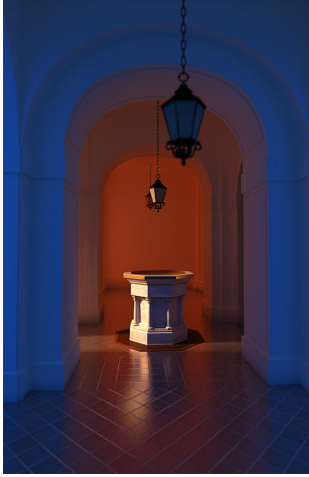
## Liturgical Design Consultant



When an architect is selected that is not a specialist in Catholic sacred architecture, sometimes a Liturgical Design Consultant is engaged in the project. However, if the architectural team is well-versed in Catholic architecture, liturgy, and symbolism, the added expense and time can be reduced by just hiring the

sculpture, furnishings, and restoration. They can be a key partner with the architect in realizing the overall aesthetics of the final church project.





architect to oversee the design of the liturgical space.

## Other Consultants

Depending on the project, many other consultants can be engaged in the process.

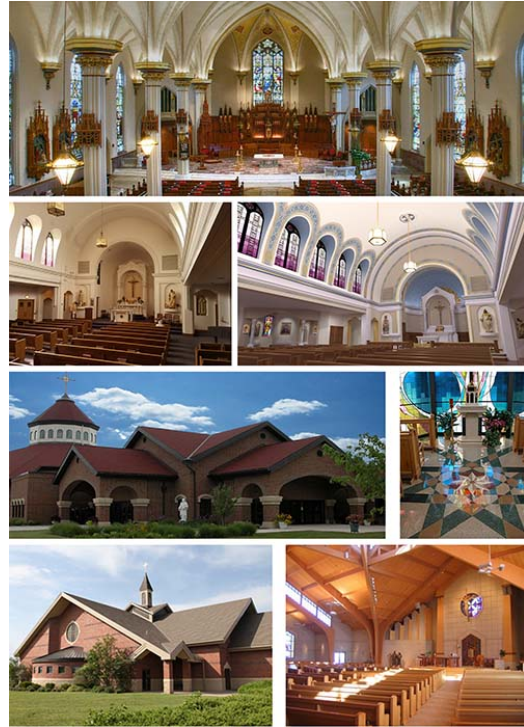
Some of them are:

- acoustics
- lighting
- civil engineering
- landscape
- planning
- etc.

Many people do not understand the role of the architect. Hopefully you can see in this short article the crucial role they play in maintaining communication, consistency, and integrity to the entire design process. Hiring an architect that knows Catholic sacred architecture, the process, the symbolism, and the requirements is important for maintaining the client's wishes. Most importantly, you need to find an architect who know HOW to design beautiful churches.

*Steve Baker*





See More Beautiful Churches



Stephen Baker, PhD(c) AIA

Steve Baker is the Principal Architect for Baker Architects, an architectural firm that has been serving the Catholic Church in Her architectural needs for over twenty years. Call us, we love to talk about beautiful Catholic churches.

Steve's PhD research is in how Catholic churches form meaning.

**Steve Baker, PhD(c), AIA**

Principal Architect

**Baker Architects, LLC**

P: 303-358-1108

E: [steve@bakeraia.com](mailto:steve@bakeraia.com)

